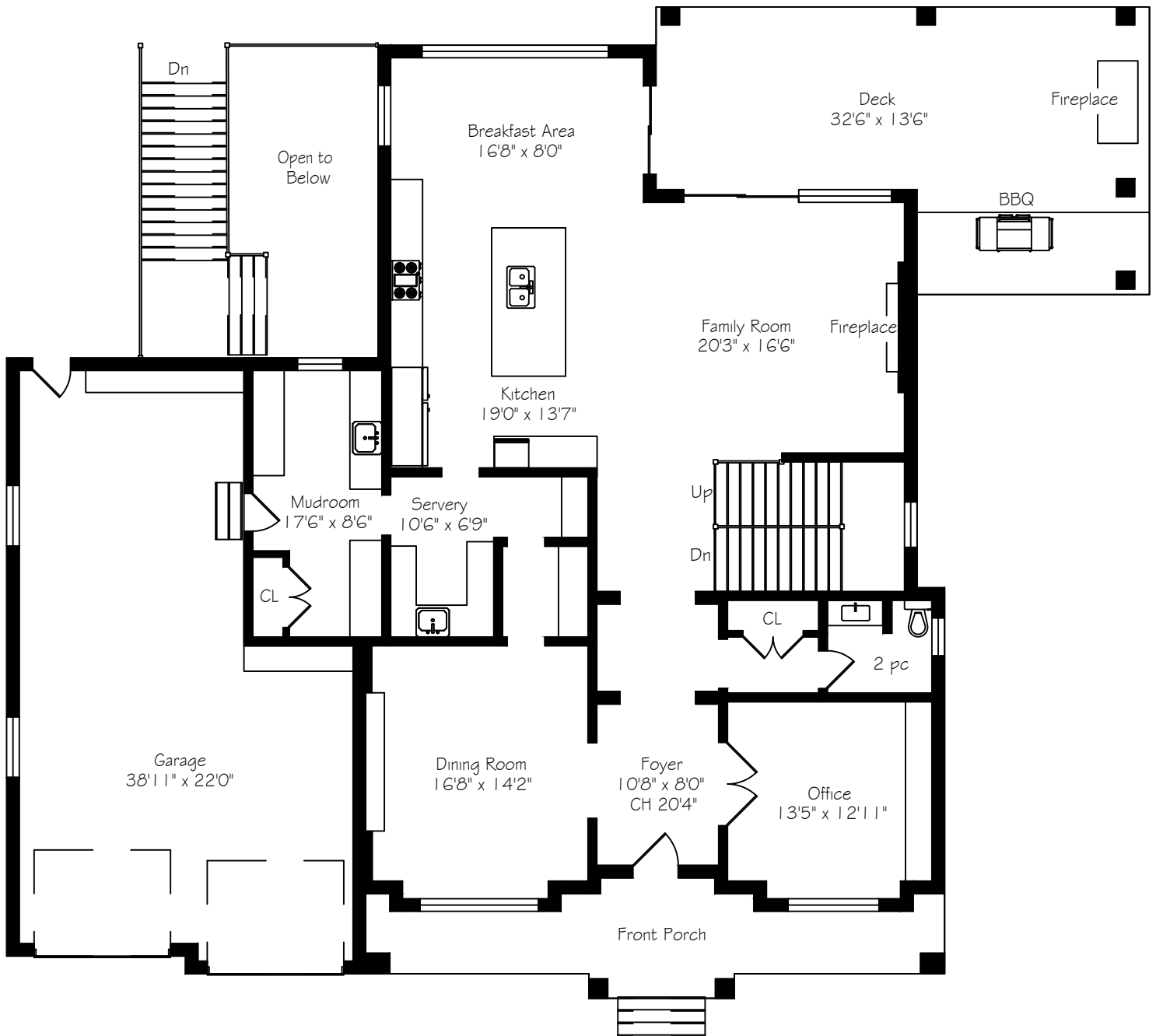
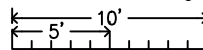


1411 Willowdown Road



Main Floor
2072 Square Feet
+ 781 Garage



Measurements and Calculations are approximate
To be used as guidelines only
www.measuredup.ca

1411 Willowdown Road

Primary Bedroom 16'7" x 14'9"

Second Bedroom 16'10" x 11'6"

Third Bedroom 15'6" x 13'11"

Fourth Bedroom 13'9" x 13'7"

Laundry 9'2" x 8'3"

Open to Below

Walk In Closet

Walk In Closet

Walk In Closet

Walk In Closet

3 pc

4 pc

3 pc

5 pc

Dn

CL

1411 Willowdown Road

Primary Bedroom
16'7" x 14'9"

Walk In Closet

5 pc

Walk In Closet

Laundry
9'2" x 8'3"

W
D

Walk In Closet

3 pc

4 pc

Walk In Closet

CL

3 pc

Second Bedroom
16'10" x 11'6"

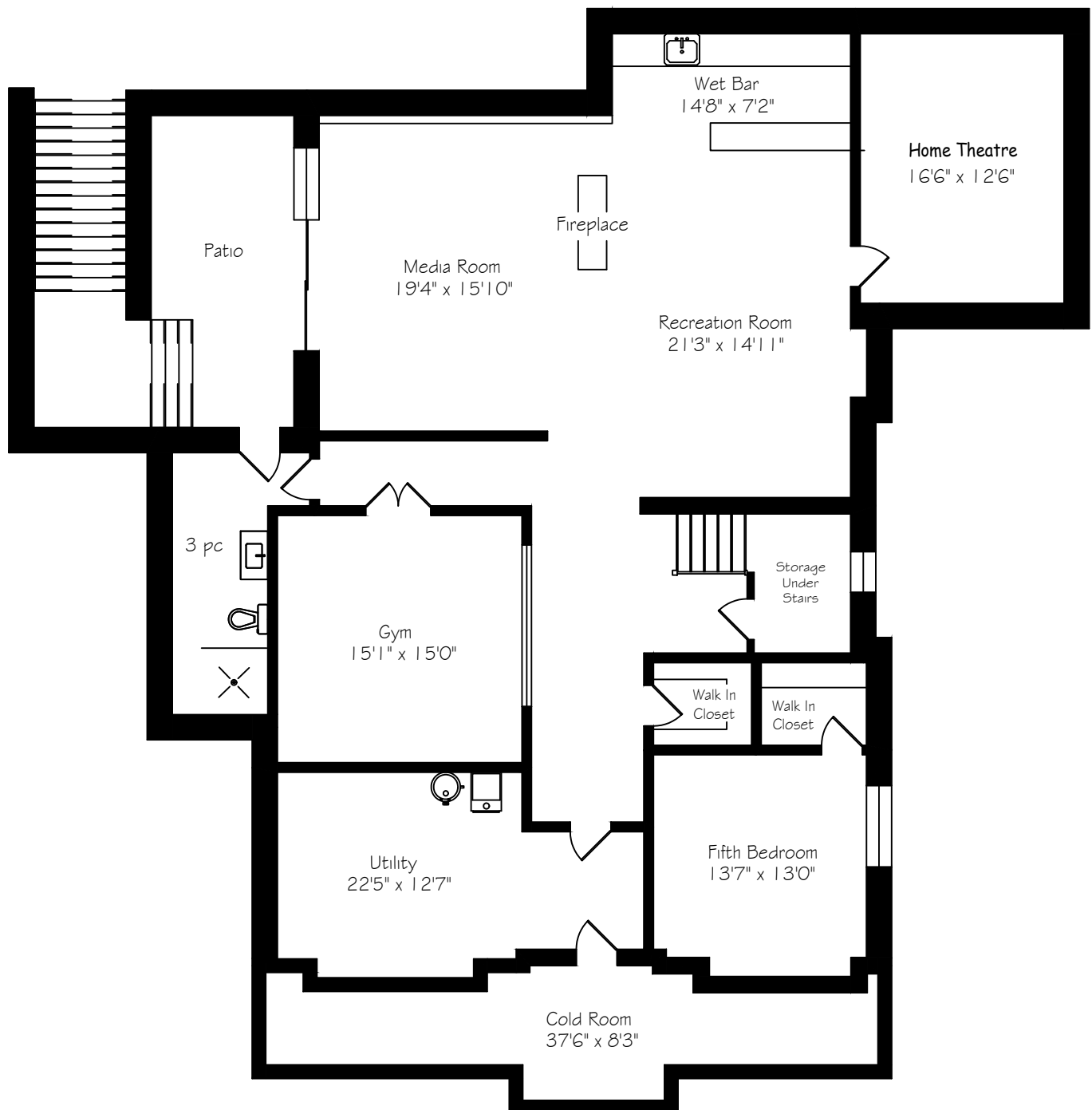
Third Bedroom
15'6" x 13'11"

Open to Below

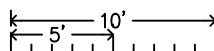
Fourth Bedroom
13'9" x 13'7"

Dn

1411 Willowdown Road



Lower Level
2786 Square Feet



Measurements and Calculations are approximate
To be used as guidelines only
www.measuredup.ca